

THE KATHMANDU VALLEY PRESERVATION TRUST

THE RESTORATION OF THE
BHANDARKHAL GARDEN & WATER ARCHITECTURE

AT PATAN DARBAR PALACE COMPLEX – A UNESCO WORLD HERITAGE SITE



The collapsed East wing of Sundari Chowk Palace | April 25, 2015
 The East wing which was built in 1936 was the only palace structure that collapsed. All other and recently restored palace buildings survived the earthquake.

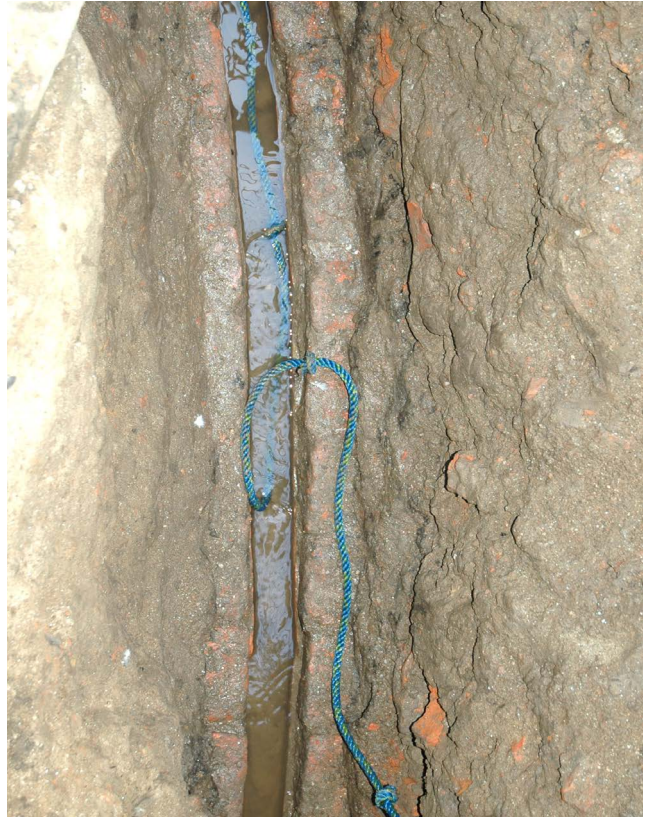


View over the Tank towards the Palace Complex | April 25, 2015
 Immediately after the first earthquake people sought refuge in the garden. For over two months more than 50 families who had lost their houses were living in tents in the garden.





Installation of the new water line | 2015



Historic water supply channel | 2015

The interlocking terracotta channels were carefully cleaned and sealed with mud and brick above.



Tusha hiti water spout | 2009

In 2009 the historic water line dating back to the 17th century was still providing clean water even though it dried up during the spring months.



Tusha hiti water spout | 2015

Six years later water supply has almost completely stopped. The little water that occasionally runs is heavily polluted.

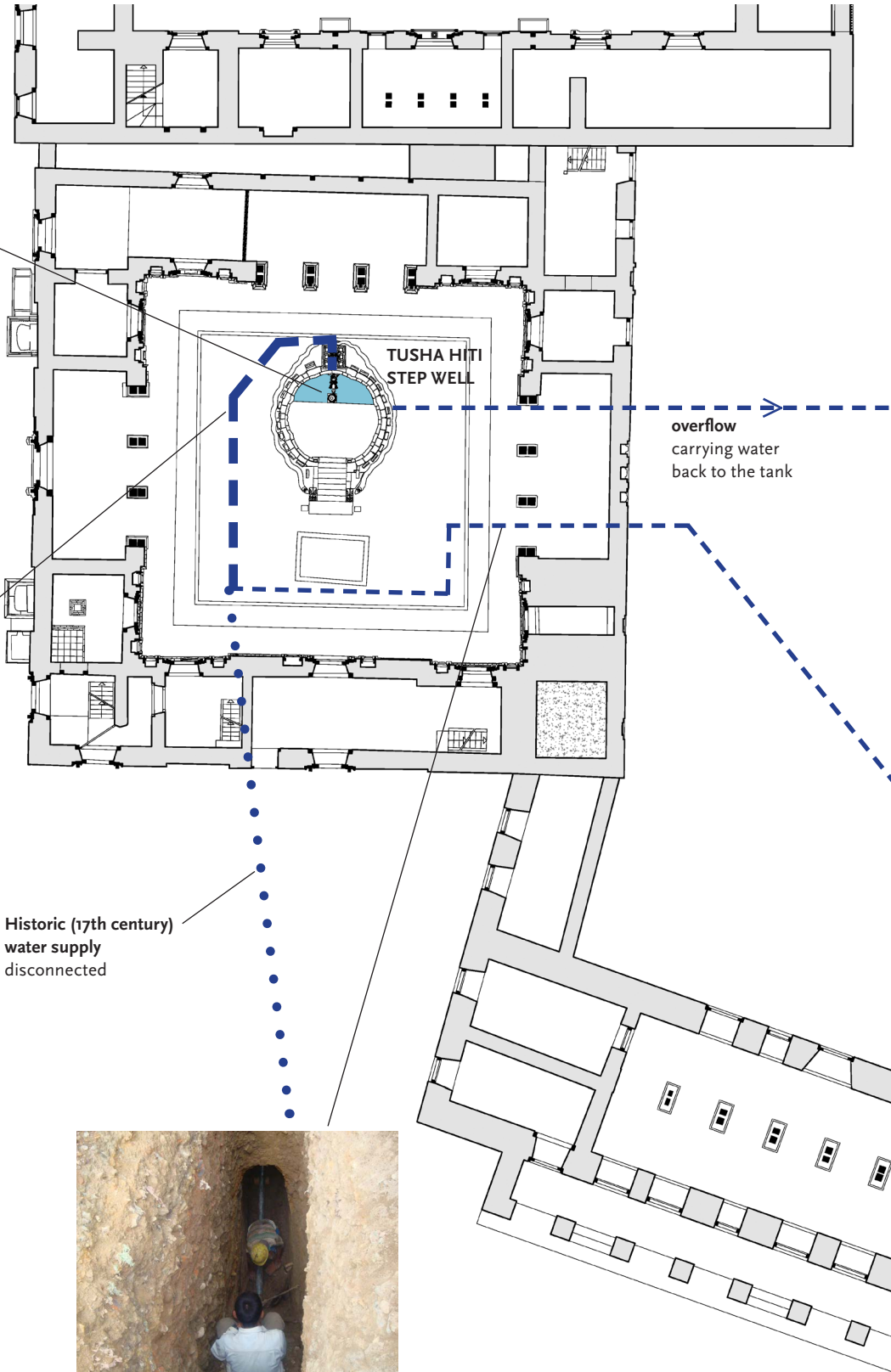




Tusha Hiti step well



Historic water supply
The terra cotta channels dating from the 17th century were restored



Historic (17th century) water supply disconnected

overflow
carrying water
back to the tank



Tunneling under the East wing
The new water line was installed at a depth of 3 meters.

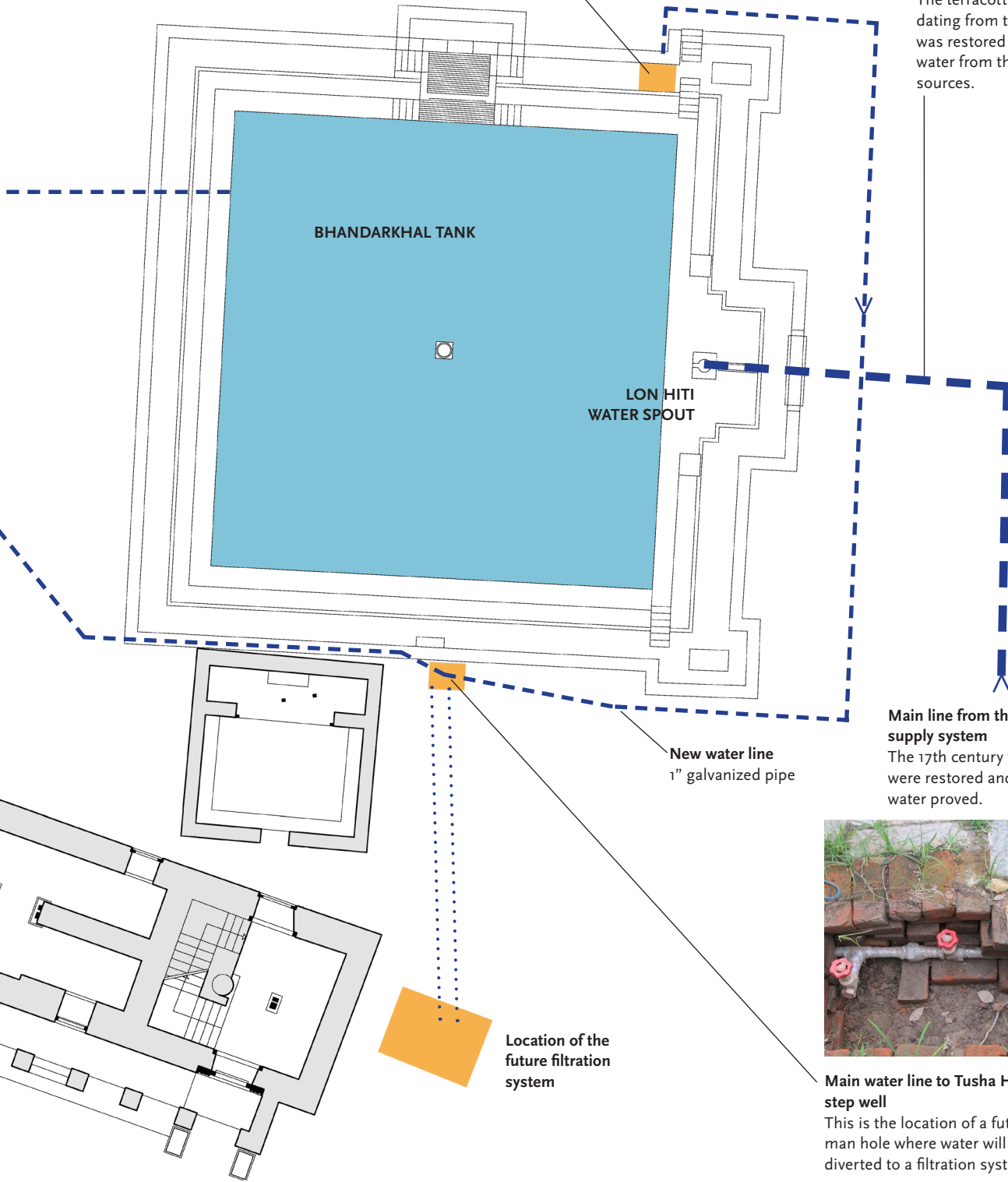




Underground pump house
with a 1 HP pump installed



Historic water line
The terracotta channel dating from the 17th century was restored and brings water from the original sources.



Main line from the historic water supply system
The 17th century terra cotta tiles were restored and the channel water proved.

New water line
1" galvanized pipe

Location of the future filtration system



Main water line to Tusha Hiti step well
This is the location of a future man hole where water will be diverted to a filtration system.





KATHMANDU VALLEY PRESERVATION TRUST

36 West 25th Street - 17th Floor
New York, NY 10010, USA
TEL: 212 727 0074

P.O. Box 13349, Kathmandu, NEPAL
TEL: (977 1) 55 46 055

kvptnepal.org

